

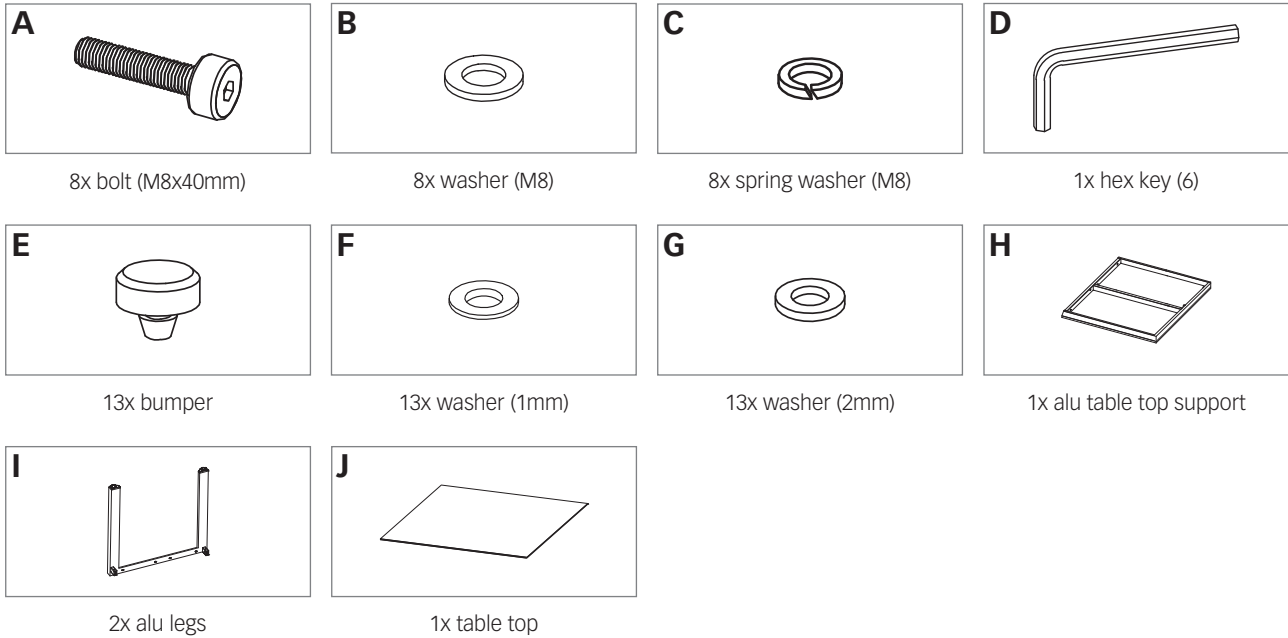
# INSTRUCTION PAPER

## SELECTA | Dining table 80x80

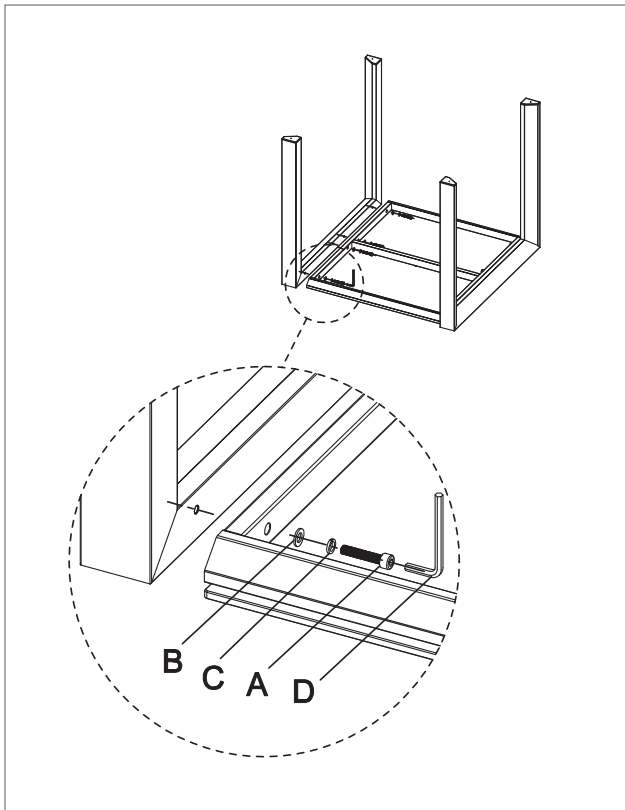
**DIPHANO**  
OUTDOOR FURNITURE

Start by unpacking everything carefully. Make sure to cover the floor to prevent any damage or scratching (you can use the cardboard box for this).

### CONTENT

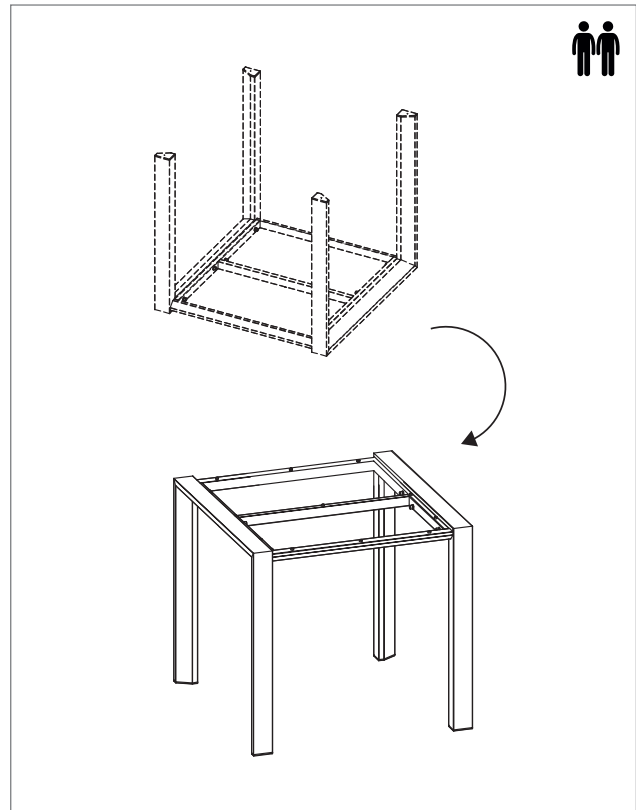


### STEP 1: ASSEMBLE LEGS



Use the hex key (D) to screw the the aluminium legs onto the table top (I) as shown in the picture. Make sure you follow the correct order as indicated by the letters in the picture. Repeat this action for the other side.

### STEP 2: TURN TABLE



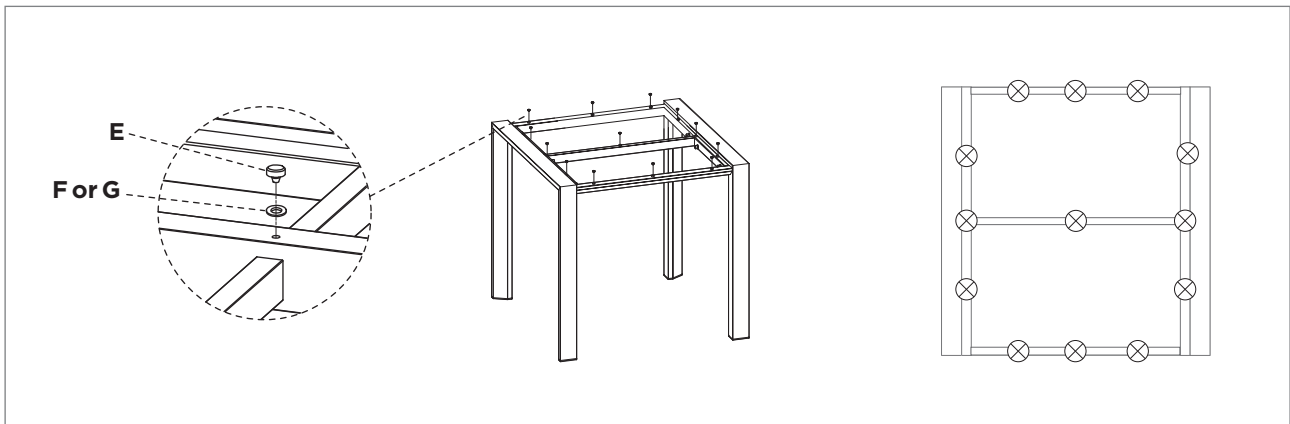
Turn the table carefully to its normal position with at least 2 persons.

# INSTRUCTION PAPER

## SELECTA | Dining table 80x80

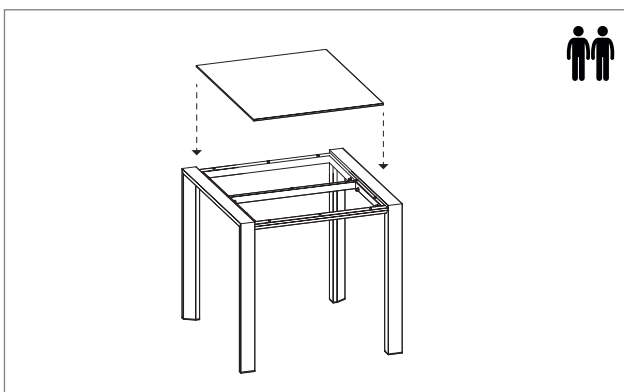
**DIPHANO**  
OUTDOOR FURNITURE

### STEP 3: PLACE BUMPERS



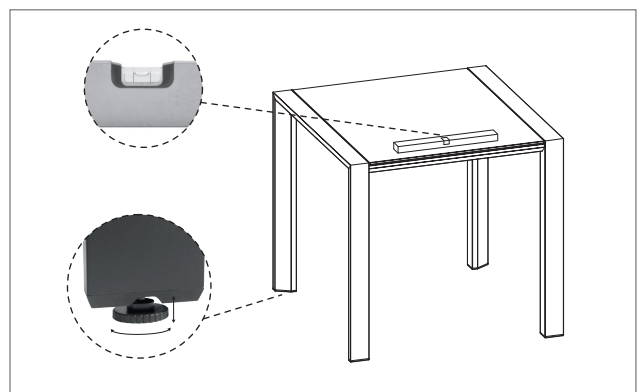
Place the bumpers (E) with the washers (F,G) on the correct positions as shown on the topview on the right. Check during setup which washer is necessary for adjusting the glass top on the frame, the 1mm or the 2mm.

### STEP 4: PLACE TABLE TOP



Carefully place the table top (J) in the lower part of the support with at least 2 persons.

### STEP 5: ADJUST FEET



Check with a spirit level if the table is placed level. If not, (un)screw the adjustable feet till your table is completely level.



DINING  
ARMCHAIR



LOUNGE CHAIR



FOOTREST



BEACH CHAIR



DECK CHAIR



LOUNGERS



DINING TABLES



HIGH DINING TABLES



EXTENDABLE TABLE



BISTRO TABLES  
108 | 92 | 74h

[www.diphano.com](http://www.diphano.com)

Diphano cannot be held responsible if the assembly instructions are not followed properly.